



GAT MONTHLY MEMBERSHIP PROGRESS REPORT

Results as of: 3/31/2021

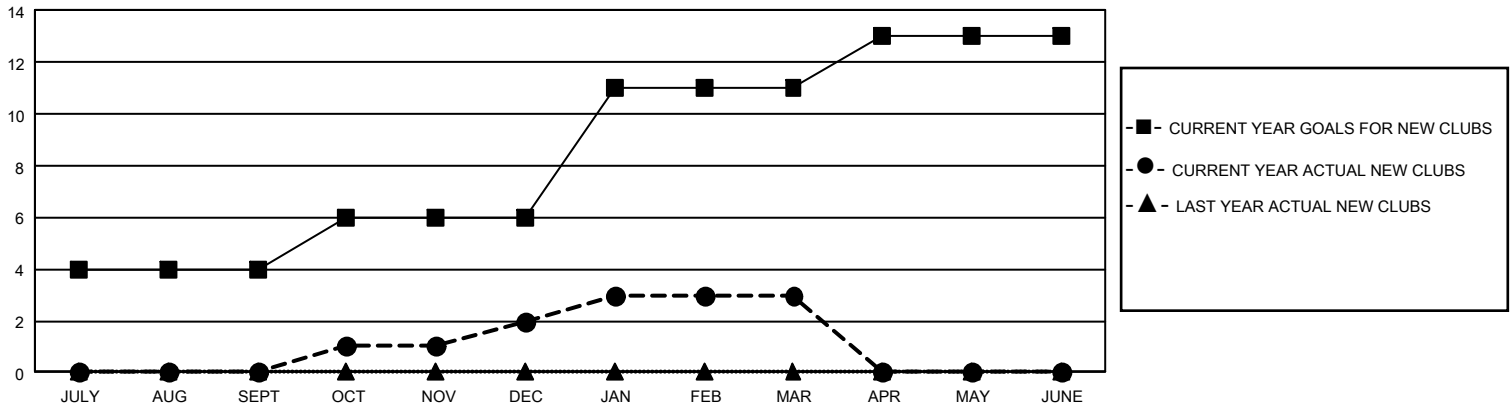
GMT Constitutional Area 5 - J, Group H

REPORT DOES NOT INCLUDE CLUBS IN UNDISTRICTED AREAS.

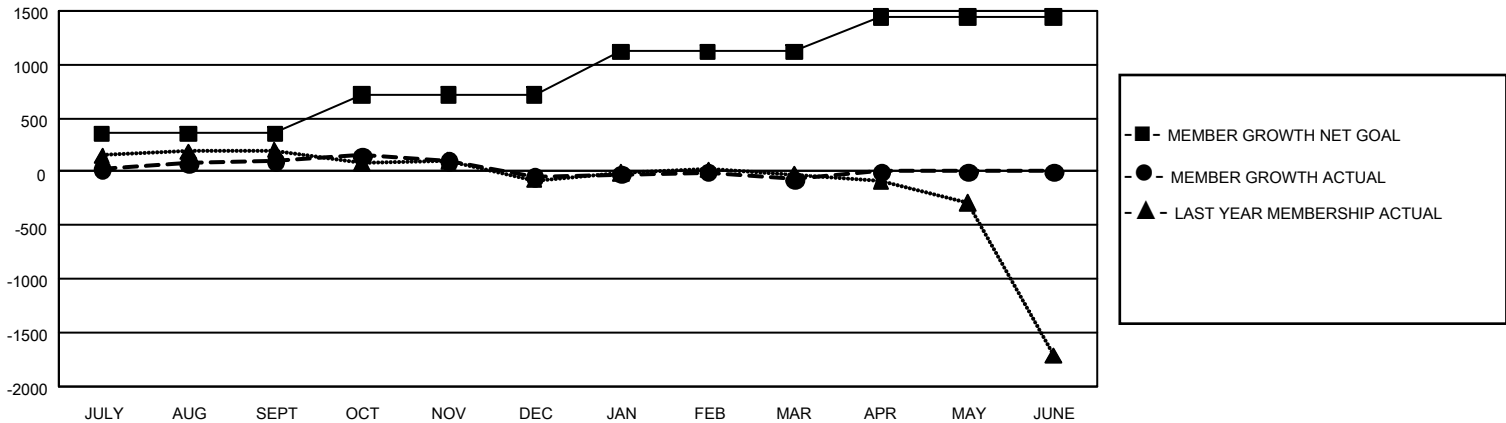
| Clubs | | | |
|-----------------------|---------------|-----------|---------------|
| RESULTS FOR 2020-2021 | | | |
| QUARTER | NEW CLUB GOAL | NEW CLUBS | DROPPED CLUBS |
| JULY/AUG/SEPT | 12 | 0 | 2 |
| OCT/NOV/DEC | 6 | 2 | 3 |
| JAN/FEB/MAR | 15 | 1 | 1 |
| APR/MAY/JUNE | 6 | 0 | 0 |

| Members | | | |
|-----------------------|------------------------|----------------------|--|
| RESULTS FOR 2020-2021 | | | |
| QUARTER | MEMBER GROWTH NET GOAL | MEMBER GROWTH ACTUAL | DROPPED MEMBERS ACTUAL (including transfers) |
| JULY/AUG/SEPT | 358 | 516 | 395 |
| OCT/NOV/DEC | 358 | 328 | 457 |
| JAN/FEB/MAR | 403 | 290 | 300 |
| APR/MAY/JUNE | 323 | 0 | 0 |

GOALS AND ACTUAL NEW CLUBS CUMULATIVE



GOALS AND ACTUAL MEMBERS CUMULATIVE



| | | | |
|--------------------------|---|--|------------------------------|
| DROPPED CLUBS: 6 | 374 CLUBS OF 700 ADDED 1 OR MORE NEW MEMBERS | GENDER DISTRIBUTION | |
| | | MALE 18,150 (74.40%) | FEMALE 6,245 (25.60%) |
| DROPPED MEMBERS | | TOTAL FAMILY UNIT MEMBERS 10,017 | |
| DECEASED 149 | CLICK HERE FOR CUMULATIVE MEMBERSHIP DATA | FAMILY MEMBERS PAYING HALF DUES 5,553 | |
| CLUB CANCELLED 13 | | | |
| OTHER 989 | | | |
| TOTAL 1,151 | | | |